

## Fecht Sandra M a Counselling Service - Orillia

orillia



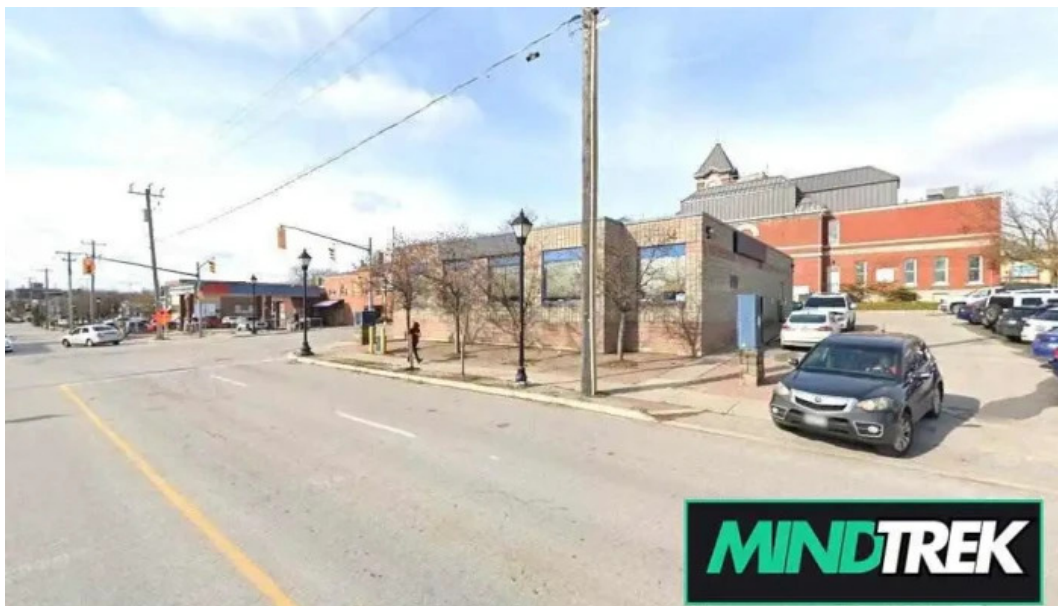
I'm not a robot



Published on: 09/04/25	Hits: 160
Comments: 0	See comments
Votes: 48	Score: 3.6

[https://www.mindtrek.ca/family-counselor/orillia/fecht-sandra-m-a-counselling-service-orillia\\_194219.p](https://www.mindtrek.ca/family-counselor/orillia/fecht-sandra-m-a-counselling-service-orillia_194219.p)

hp



orillia

## Fecht Sandra M a Counselling Service - Orillia

### Discovering Family Counselor Fecht Sandra M: A Counseling Service in Orillia, Ontario

If you're seeking support for family dynamics or personal growth, **Fecht Sandra M** offers an exceptional counseling service in **Orillia, Ontario**. This article explores the unique aspects of the service and highlights its commitment to accessibility.

## Accessibility Matters

In today's world, accessibility is a pivotal factor when choosing a counseling service. **Fecht Sandra M** understands this need and has ensured that their facilities are **wheelchair-accessible**. This commitment allows individuals with mobility challenges to participate fully in their counseling sessions.

## Amenities That Enhance Comfort

When visiting a counseling service, it's essential to feel comfortable and secure. **Fecht Sandra M** prioritizes client comfort by providing various **amenities**. The welcoming environment fosters open communication and encourages clients to share their thoughts and feelings without hesitation.

## Convenience for All Clients

One of the standout features of **Fecht Sandra M's** counseling service is the availability of a **wheelchair-accessible car park**. This facilitates easy access for clients with mobility issues, ensuring that everyone can arrive at their appointments without difficulty. The inclusive design demonstrates a genuine understanding of client needs.

## Conclusion

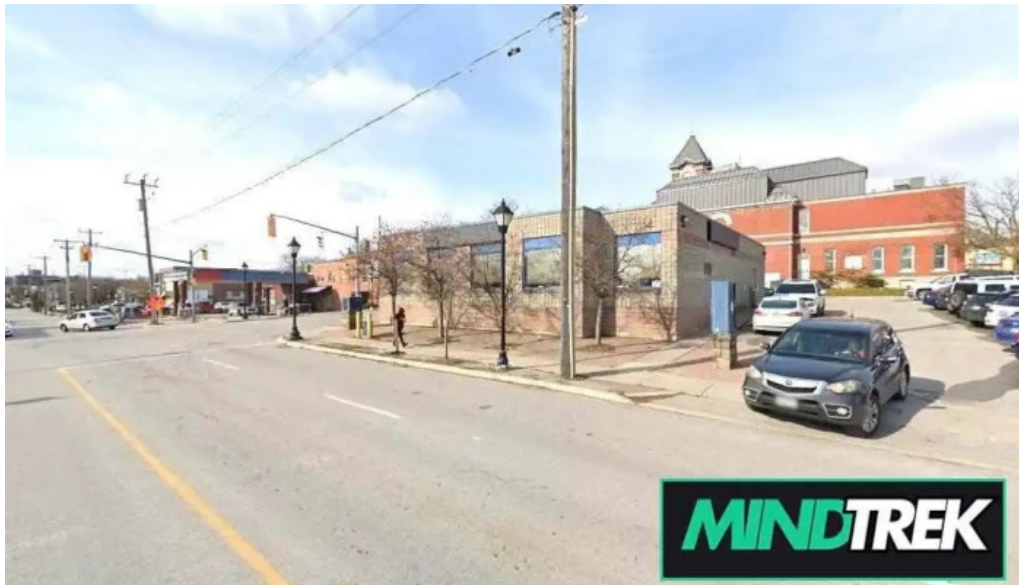
At **Fecht Sandra M**, you will find a supportive environment focused on enhancing your mental well-being. With an emphasis on **accessibility** and comfort, this counseling service in Orillia, Ontario, is dedicated to serving individuals from all walks of life. Whether you need guidance for family issues or personal development, Fecht Sandra M is ready to assist you.

## We are based in

51 Colborne St E, L3V 1T5 Orillia, Ontario - Canada (CA)

If you require to modify any element that you think is not accurate related to this site, we kindly request forward a message so that we will correct it quickly. In advance thank you very much.

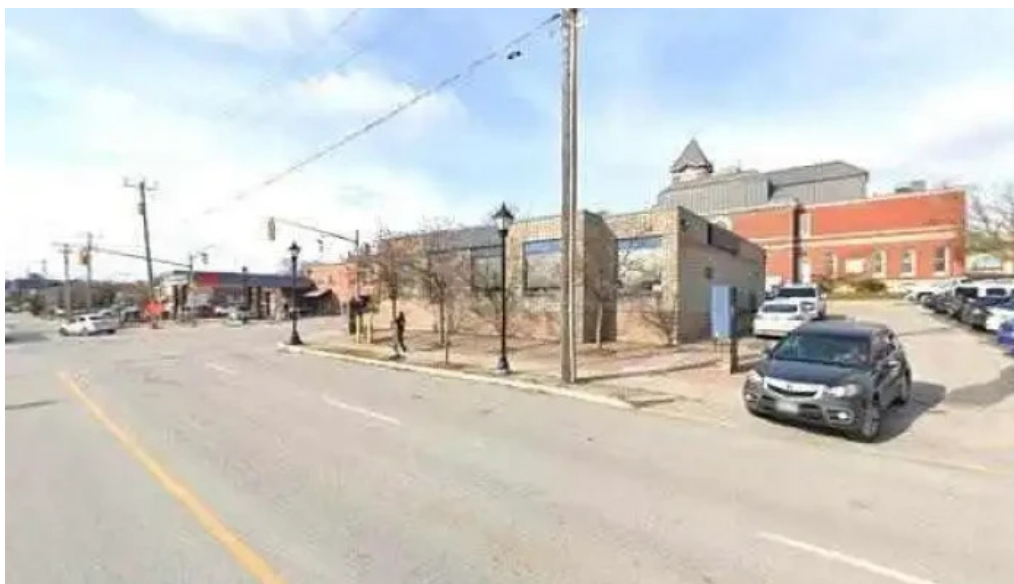
## Images



*Fecht sandra m a counselling service orillia*



*Fecht sandra m a counselling service map*



*Fecht sandra m a counselling service all*

## Tags

*Wheelchair-accessible car park, Toilet, Amenities, Accessibility*

## Related content

<b>5.0 *</b>	<i>Liminal Counselling - Ajax</i>
<b>5.0 *</b>	<i>Durham Counselling - Ajax</i>
<b>4.7 *</b>	<i>Cbm Psychological &amp; Counselling Services - Pickering</i>
<b>4.3 *</b>	<i>Embrace Well Psychological Services - Ajax</i>
<b>4.5 *</b>	<i>Safe Spaces Therapy - Ajax</i>
<b>3.9 *</b>	<i>Integrate Health Services - Ajax</i>
<b>3.7 *</b>	<i>MacDonald Psychotherapy - Ajax</i>
<b>5.0 *</b>	<i>Acquah Counseling and Consulting Services - Ajax</i>
<b>2.8 *</b>	<i>Jeff Packer Msw &amp; Associates Inc. - Oshawa</i>
<b>3.8 *</b>	<i>Mills   Gosse Psychology (Ajax Pickering) - Ajax</i>

## Categories

child health care centre
child psychologist

chiropractor
community center
community health centre
consultant
corporate office
counselor
doctor
family counselor
family service center
health counselor
health spa
laser hair removal service
life coach
marriage or relationship counselor
massage therapist
mental health clinic
mental health service
naturopathic practitioner
physical therapist
physical therapy clinic
psychiatrist
psychologist
psychologists
psychotherapist
skin care clinic
social worker
support group