

New Path Youth and Family Services - Barrie

barrie



I'm not a robot

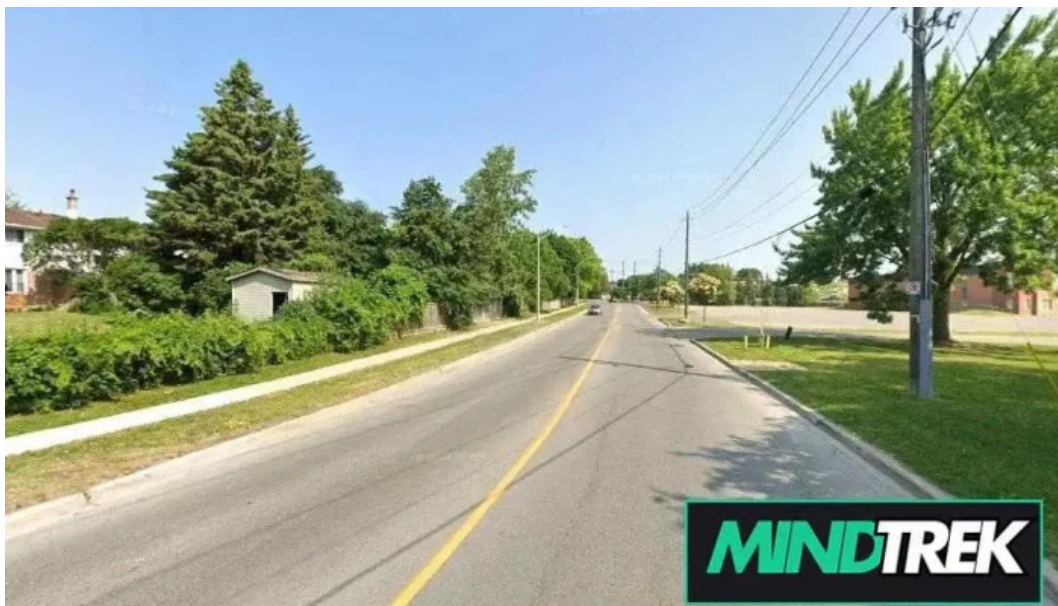


RECAPTCHA

Published on: 28/04/25	Hits: 18
Comments: 0	See comments
Votes: 2	Score: 5

https://www.mindtrek.ca/mental-health-service/barrie/new-path-youth-and-family-services-barrie_238

676.php



barrie

New Path Youth and Family Services - Barrie

Mental Health Service: New Path Youth and Family Services

New Path Youth and Family Services, located in Barrie, Ontario, is a beacon of hope for many families navigating the complexities of mental health challenges. With a commitment to providing accessible and compassionate care, this service ensures that individuals and families can find the support they need.

Accessibility Features

One of the standout features of New Path is its **wheelchair-accessible

entrance**. This thoughtful design choice demonstrates the organization's dedication to inclusivity, allowing individuals with mobility challenges to access support without obstacles. Additionally, the **wheelchair-accessible car park** further enhances convenience for patrons who may require assistance.

Amenities for All

New Path not only prioritizes physical accessibility but also addresses essential needs with facilities like a **wheelchair-accessible toilet**. This amenity is crucial for ensuring comfort and dignity for all clients. With a focus on **accessibility**, New Path effectively caters to diverse populations, making it a safe space for everyone seeking help.

Supporting Families Through Tough Times

The positive impact of New Path Youth and Family Services is evident from testimonials provided by visitors. One parent shared their experience from eight years ago when their child faced multiple challenges, including medication issues, suicidal thoughts, and struggles related to gender identity, ADHD, and schizophrenia. The empathetic staff offered insightful solutions that were previously overlooked by others, providing much-needed relief to families in distress.

Lasting Impact

Years later, this parent reflects on the invaluable support received, emphasizing the effectiveness of the strategies introduced by the professionals at New Path. Their approach not only alleviated immediate concerns but also equipped the family with tools to handle ongoing challenges. In conclusion, New Path Youth and Family Services in Barrie, Ontario, stands out as a vital resource for mental health support. Their commitment to accessibility through wheelchair-friendly facilities and empathetic care demonstrates the organization's mission to foster healing and resilience within families.

You can reach us at

165 Ferris Ln, L4M 2Y1 Barrie, Ontario - Canada (CA)

The contact line of the respective **Mental health service** is +1705-725-7656
And if you want to send a WhatsApp, you can do so at +1705-725-7656

You can visit us at the following hours:

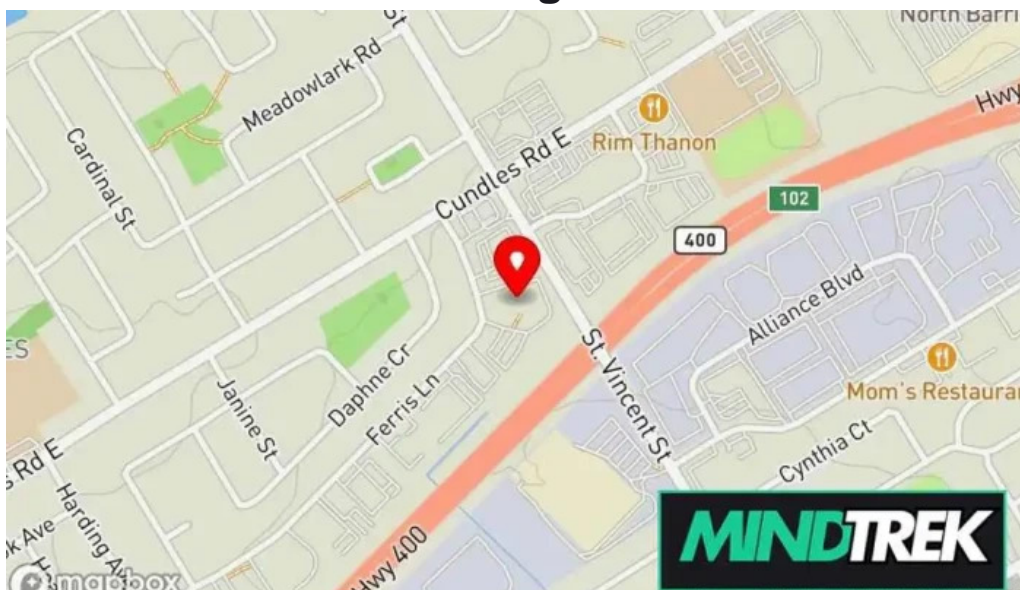
Day Hours
Monday

Closed
Tuesday
8:30?AM–4:30?PM
Wednesday
8:30?AM–4:30?PM
Thursday
8:30?AM–4:30?PM
Friday
8:30?AM–4:30?PM
Saturday
Closed
Sunday
Closed

The website is New Path Youth and Family Services

If you require to change any detail that you believe is not accurate concerning this portal, we kindly request send us a message so we can we will handle it quickly. In advance we appreciate it.

Images



New path youth and family services map



New path youth and family services by owner



New path youth and family services barrie



New path youth and family services all

Tags

Wheelchair-accessible car park, Wheelchair-accessible entrance, Toilet, Wheelchair-accessible toilet, Accessibility, Amenities

Related content

- | | |
|-------|--|
| 3.0 * | <i>New Path Youth and Family Services - Orillia</i> |
| 4.0 * | <i>New Path Youth and Family Services - Alliston</i> |
| 4.9 * | <i>New Path Youth & Family Counseling - Orillia</i> |
| 5.0 * | <i>New Flow Medical Clinic - Newmarket</i> |
| 4.8 * | <i>New Roots Therapy - Whitby</i> |
| 4.5 * | <i>New Leaf Psychotherapy - Angus</i> |
| 4.4 * | <i>Arnprior Child & Youth Counseling - Arnprior</i> |
| 3.7 * | <i>Child & Youth Psychological Services - Hamilton</i> |
| 5.0 * | <i>South Simcoe Physiotherapy - New Tecumseth</i> |
| 5.0 * | <i>Soul Path Counselling & Psychotherapy & Holistic Services - Orillia</i> |

Categories

academic department

acupuncture clinic
acupuncturist
addiction treatment center
advertising agency
art studio
bankruptcy service
child health care centre
child psychologist
chiropractor
citizen information bureau
community center
community health centre
consultant
corporate office
counselor
crisis center
dentist
doctor
education center
emdr psychotherapist
equestrian facility
family counselor
family service center
fitness center
health counselor
health spa
holistic medicine practitioner
home health care service
hotel
hypnotherapy service
laser hair removal service
life coach
lymph drainage therapist
marriage or relationship counselor
massage spa
massage therapist
medical center
medical clinic
medical spa
mental health clinic
mental health service
naturopathic practitioner

nutritionist
occupational health service
occupational therapist
orthopedic clinic
orthotics & prosthetics service
personal trainer
pharmacy
physical therapist
physical therapy clinic
psychiatrist
psychologist
psychologists
psychotherapist
rehabilitation center
skin care clinic
sleep clinic
social services organization
social worker
spa
specialized clinic
speech pathologist
sports medicine clinic
student career counseling office
support group
wellness center
yoga studio