

Anita Pal - Barrie

barrie

☐ I'm not a robot



| | |
|------------------------|--------------|
| Published on: 27/04/25 | Hits: 10 |
| Comments: 0 | See comments |
| Votes: 1 | Score: 5 |

https://www.mindtrek.ca/psychotherapist/barrie/anita-pal-barrie_238599.php



barrie

Anita Pal - Barrie

Discovering Psychotherapist Anita Pal in Barrie, Ontario

If you are looking for professional mental health support, consider scheduling an appointment with ****Psychotherapist Anita Pal****. Located in the heart of Barrie, Ontario, her practice offers a welcoming environment for individuals seeking to improve their mental well-being.

Amenities and Accessibility

One of the standout features of Anita Pal's practice is its commitment to ****accessibility****. The facility includes a ****wheelchair-accessible car park****,

ensuring that all clients can conveniently access the services without any barriers. Additionally, there is a ****free parking lot**** available for clients, making it easier to plan your visit without the stress of finding parking.

Planning Your Visit

When considering a visit to see ****Anita Pal****, it is important to note that ****appointments are recommended****. Proper planning can enhance your experience and ensure that you receive the attention you need. To secure your spot, it is best to contact her office ahead of time to arrange your visit.

Facilities and Comfort

Clients often appreciate the thoughtful amenities provided at the practice. The comfortable waiting area ensures that you can relax before your session begins. While visiting, you might also notice that the facilities include a ****toilet**** for convenience, further enhancing the overall experience. In conclusion, if you are in Barrie and seeking psychotherapy services, ****Anita Pal**** is a highly recommended professional with a focus on accessibility and client comfort. Remember to plan your visit and make an appointment to take advantage of the valuable services offered.

You can find us at

121 Wellington St W Suite 114, L4N 1L2 Barrie, Ontario - Canada (CA)

The contact line of the mentioned **Psychotherapist** is +1705-321-6267
And if you want to send a WhatsApp, you can do so at +1705-321-6267

Our business hours are:

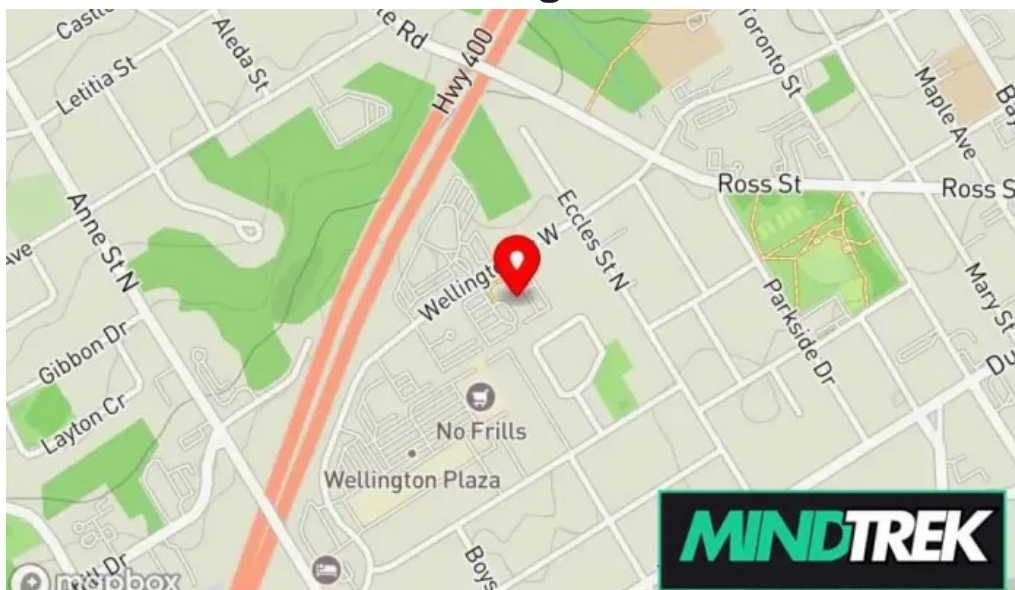
| Day | Hours |
|-----------|--------------|
| Monday | Closed |
| Tuesday | 9?AM–4:30?PM |
| Wednesday | 10?AM–8?PM |
| Thursday | 10?AM–5?PM |
| Friday | 9:30?AM–5?PM |
| Saturday | 9?AM–1?PM |

Sunday
Closed

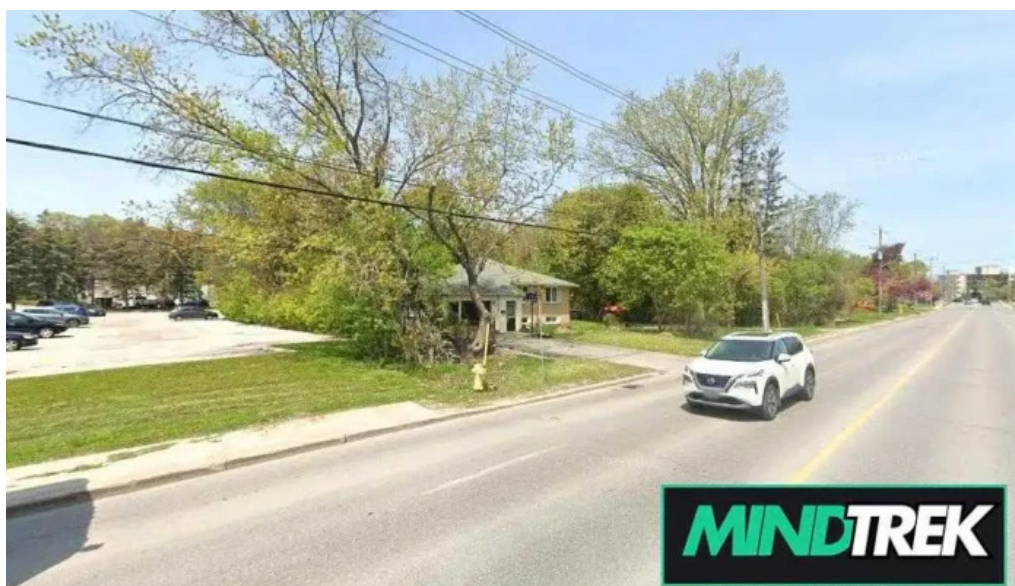
The website is [Anita Pal](#)

If you require to adjust any information that you believe is not correct about this page, we kindly request deliver a message so we can we will handle it promptly. Thanks beforehand we appreciate it.

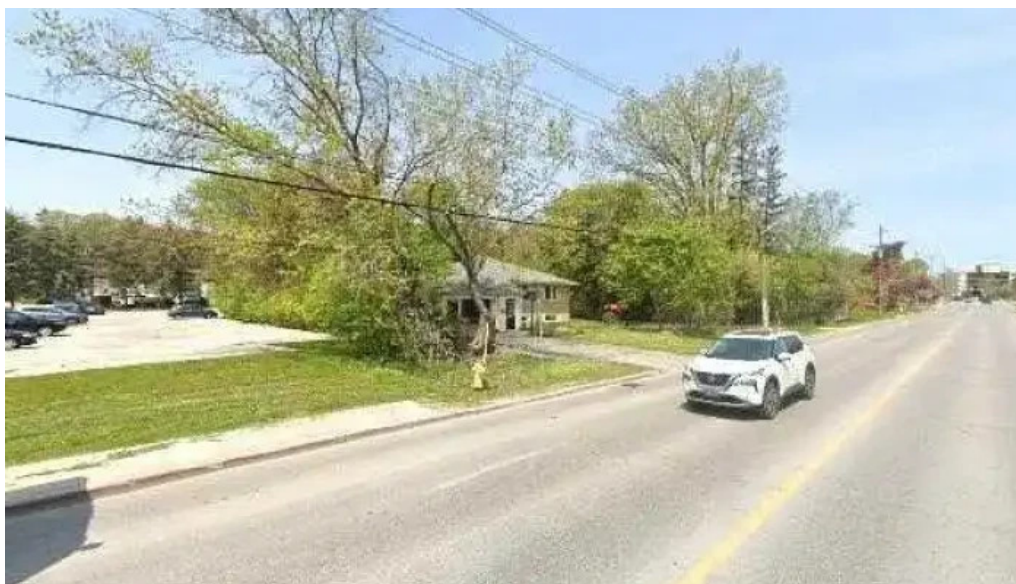
Images



Anita pal map



Anita pal barrie



Anita pal all

Tags

Planning, Appointment required, Appointments recommended, Accessibility, Wheelchair-accessible car park, Free parking lot, Amenities, Parking, Toilet

Related content

| | |
|-------|--|
| 4.9 * | Well-Being Solution Clinic - Barrie |
| 4.9 * | Horseshoe Wellness Chiropractic & Acupuncture - Barrie |
| 4.8 * | Sports Medicine and Rehabilitation Centre - Eagle Ridge - Barrie |
| 5.0 * | Rediscover Wellness - Barrie |
| 4.8 * | Bloom-Health And Wellness For Growing Families - Barrie |
| 5.0 * | Evergreen Wellness Studio - Massage, Chiropractic Care, Physiotherapy, Naturopath, Yoga, Meditation - Barrie |
| 4.0 * | Ask4care Support Services Inc - Barrie |
| 4.5 * | Skill Builders - Barrie |
| 5.0 * | Sage Insight Psychotherapy & Counselling - Ancaster |
| 5.0 * | Daru Therapy Centre Psychotherapy & Counselling - Ancaster |

Categories

| |
|------------------------------------|
| academic department |
| acupuncture clinic |
| acupuncturist |
| addiction treatment center |
| advertising agency |
| art studio |
| bankruptcy service |
| child health care centre |
| child psychologist |
| chiropractor |
| citizen information bureau |
| community center |
| community health centre |
| consultant |
| corporate office |
| counselor |
| crisis center |
| dentist |
| doctor |
| education center |
| emdr psychotherapist |
| equestrian facility |
| family counselor |
| family service center |
| fitness center |
| health counselor |
| health spa |
| holistic medicine practitioner |
| home health care service |
| hotel |
| hypnotherapy service |
| laser hair removal service |
| life coach |
| lymph drainage therapist |
| marriage or relationship counselor |
| massage spa |
| massage therapist |
| medical center |
| medical clinic |
| medical spa |
| mental health clinic |
| mental health service |

| |
|----------------------------------|
| naturopathic practitioner |
| nutritionist |
| occupational health service |
| occupational therapist |
| orthopedic clinic |
| orthotics & prosthetics service |
| personal trainer |
| pharmacy |
| physical therapist |
| physical therapy clinic |
| psychiatrist |
| psychologist |
| psychologists |
| psychotherapist |
| skin care clinic |
| sleep clinic |
| social services organization |
| social worker |
| spa |
| specialized clinic |
| speech pathologist |
| sports medicine clinic |
| student career counseling office |
| support group |
| wellness center |
| yoga studio |