

## Mary Charron Therapy - Newmarket

newmarket



I'm not a robot



RECAPTCHA

Published on: 19/04/25	Hits: 22
Comments: 0	See comments
Votes: 2	Score: 5

[https://www.mindtrek.ca/psychotherapist/newmarket/mary-charron-therapy-newmarket\\_214407.php](https://www.mindtrek.ca/psychotherapist/newmarket/mary-charron-therapy-newmarket_214407.php)



*newmarket*

### *Mary Charron Therapy - Newmarket*

#### **Mary Charron Therapy: A Compassionate Approach in Newmarket, Ontario**

When it comes to finding a supportive and effective psychotherapist, many families look for not only expertise but also accessibility. **Mary Charron**

**Therapy**, located in Newmarket, Ontario, excels in both areas, making it an excellent choice for individuals and families seeking mental health services.

## **Accessibility Matters**

Mary Charron's practice prioritizes **accessibility** for everyone. With a dedicated **wheelchair-accessible car park**, her facility ensures that clients with mobility challenges can easily access her services. This commitment to **accessibility** reflects her understanding of the diverse needs of her clients.

## **A Comfortable Environment**

An essential aspect of therapy is providing a welcoming atmosphere. Mary has been praised for creating a safe and comfortable space where clients, including children, feel at ease. This was highlighted by a parent who expressed satisfaction with how well her 7-year-old daughter connected with Mary. The warmth and relatability of Mary's therapeutic approach help foster trust, making it easier for clients to open up about their feelings.

## **Comprehensive Amenities**

In addition to her compassionate approach, Mary Charron's practice features various **amenities** designed to enhance the client experience. This includes a clean, modern **toilet** facility that allows clients to feel comfortable during their visits. Attention to these details ensures that clients can focus entirely on their therapy sessions without distraction.

## **Flexible Scheduling and Financial Accessibility**

One of the standout aspects of Mary's service is her **flexible schedule**. Clients appreciate her willingness to accommodate last-minute appointments, as noted by a parent who needed a sudden meeting at 8 am. This flexibility is crucial for busy families and those with unpredictable schedules.

Moreover, Mary's pricing is described as **financially reasonable**, making her services more accessible to a broader range of clients. Providing receipts for her services, she helps clients navigate insurance and reimbursement processes, further relieving financial stress.

## **Conclusion**

For anyone seeking therapeutic support in Newmarket, Ontario, **Mary Charron Therapy** offers an ideal blend of accessibility, comfort, and professional expertise. With a focus on creating a welcoming environment, flexible scheduling, and an understanding of financial needs, Mary is committed to

providing quality counseling that resonates with her clients.

**The location of our premises is**

411 Queen St, L3Y 2G9 Newmarket, Ontario - Canada (CA)

The contact phone of the respective **Psychotherapist** is +1647-697-5572

And if you want to send a WhatsApp, you can do so at +1647-697-5572

The website is Mary Charron Therapy

If necessary to alter any information that you think is not precise regarding this portal, we ask send us a message so that we will adjust it as soon as possible. Thanks beforehand thanks.

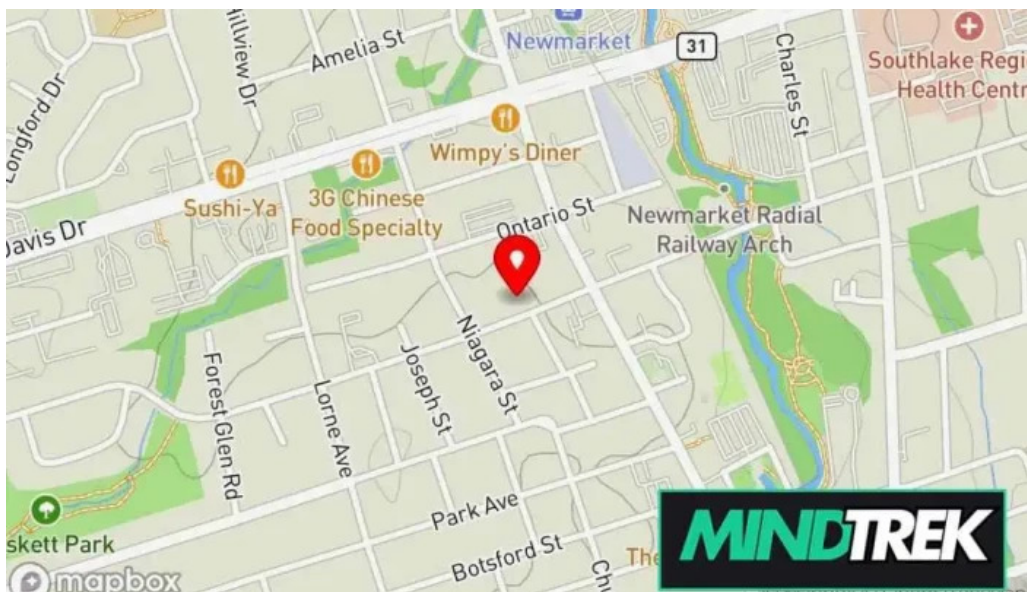
## Images



*Mary charron therapy street view 360deg*

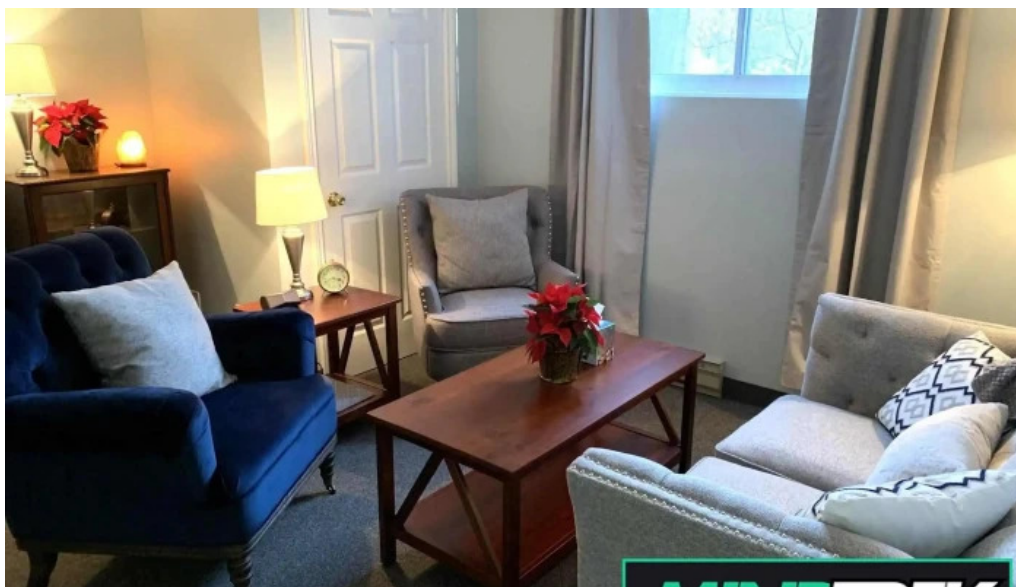


*Mary charron therapy newmarket*



*Mary charron therapy map*





*Mary charron therapy by owner*



*Mary charron therapy all*

## Tags

*Amenities, Toilet, Accessibility, Wheelchair-accessible car park*

## Related content

---

**5.0 \*** *Hs Therapy - Healing Space - Whitby*

---

**5.0 \*** *Near North Therapy - Trauma Therapy Orillia - Orillia*

<b>5.0 *</b>	<i>Cedar Tree Therapy - Brooklin</i>
<b>4.5 *</b>	<i>Safe Spaces Therapy - Ajax</i>
<b>5.0 *</b>	<i>Access Therapy Centre - Oshawa</i>
<b>4.5 *</b>	<i>Petros Therapy - Alliston</i>
<b>5.0 *</b>	<i>Clear Mind Therapy - Pickering</i>
<b>4.8 *</b>	<i>New Roots Therapy - Whitby</i>
<b>4.1 *</b>	<i>Ascendy Therapy - Pickering</i>
<b>4.1 *</b>	<i>Bp Counselling &amp; Therapy - Ajax</i>

## Categories

acupuncture clinic
acupuncturist
addiction treatment center
art studio
bankruptcy service
child health care centre
child psychologist
chiropractor
community center
community health centre
consultant
corporate office
counselor
dentist
doctor
education center
emdr psychotherapist
equestrian facility
family counselor
family service center
fitness center
health counselor
health spa
holistic medicine practitioner
home health care service

hotel
laser hair removal service
life coach
lymph drainage therapist
marriage or relationship counselor
massage spa
massage therapist
medical center
medical clinic
medical spa
mental health clinic
mental health service
naturopathic practitioner
nutritionist
occupational health service
orthopedic clinic
orthotics & prosthetics service
personal trainer
pharmacy
physical therapist
physical therapy clinic
psychiatrist
psychologist
psychologists
psychotherapist
skin care clinic
sleep clinic
social services organization
social worker
spa
speech pathologist
sports medicine clinic
student career counseling office
support group
wellness center
yoga studio